

The Alumni

NEWSLETTER

CLEVELAND HIGH SCHOOL ALUMNI ASSOCIATION



June 2010

Volume 16, Issue 2

2010 MEMORIAL DAY TREK AN ARDUOUS JOURNEY

The word trek is defined as a difficult, often "arduous journey." The 2010 CHS Alumni Association Memorial Day Trek was indeed an arduous journey. There was a heavy rainfall. The entrance to the Cleveland High School Memorial Forest was locked. The busload of students was late. Some people decided to leave. The Honor Guard from Fort Lewis left for another presentation. The Memorial Day ceremony had all the appearance of a total disaster.

Finally the school bus arrived. The situation was explained to the teachers in charge, Teo Cadiente & Karen Haggard. Many people had already left and canceling the ceremony was under consideration. Karen Haggard and others expressed their concerns, saying they had come all that way, they had brought the key to the grounds, the students were there and we should do something. The alumni members agreed and a shortened program did take place.

Those of us who weathered the storm and remained in the forest were privileged to hear an address by Wendy Noritake, a niece to Yoshito Noritake who lost his life during World War II while serving with the Japanese-American 442nd Regimental Combat Team in Europe. Three members of the Noritake family attended and expressed their appreciation for the forest and its roll in keeping family and Cleveland High School heritage alive.

The program opened with the flag salute, led by Bernie Moskowitz. Don Armeni gave an invocation, a short history of Memorial Day and a closing poem.

Several students, teachers and alumni made the trek to the rock to honor the fallen men that had attended Cleveland High School — men who lost their lives while serving in our armed forces.

In spite of difficulties of this Memorial Day ceremony we shall continue the "Trek" in coming years. We encourage students, relatives and alumni to join us next year to pay tribute to our honored dead.

We would like to encourage friends or relatives who have memories of a fallen hero to share their stories with us. Information on any alumni war casualties would be appreciated.

Wendy Noritake's speech titled **One of Our Honored Dead** is provided on Page 3. We thank her for this tribute to her uncle and to our memorial site.



STUDENTS, STAFF, VETS & ALUMNI SURVIVING THE ELEMENTS



WW II veteran Larry Zipp (CHS '42) with Kathy Uno, niece of Yoshito Noritake, and her son Johnny Vadez.



**CLEVELAND HIGH SCHOOL
ALUMNI ASSOCIATION**

PO Box 94004
Seattle, WA 98124-9404
www.clevelandalumsea.org
email: chsaaboard@gmail.com

OFFICERS

President

Pat Coluccio '47

206-799-3271

Email: p.coluccio@comcast.net

Vice President

Bernie Moskowitz '57

206-772-6285

Secretary

JoAnn Victor Smith '56

425-487-3952

email: chsa56jo@comcast.net

Treasurer Pro Tem

Allen Storaasli '62

253-946-0554

Email: astoraasli@comcast.net

BOARD MEMBERS:

Liaison with CHS and PTSA

Jim Southcott '56

206-399-8458

By-Laws & Procedures

Gene Lux '44

206-772-3177

Email: evlux@comcast.net

Historian

Jim Walters '54

360-452-2530

Email: danklady@msn.com

Newsletter Flunkee

John Barton '54

425-432-9592

Email: barzarxxx@comcast.net

PUBLICATION TEAM

John Barton '54
JoAnn Victor Smith '56
Bernie Moskowitz '57
Patricia Rosenkranz '49
Kathleen Gemmill Stremick '59
Alison Sing '64
Pat Coluccio '47
Mary Lou Barton '54



Treasurer's Report

The financial situation of the CHS Alumni Association is sound. Since the December report our total resources have increased by \$2,749 to \$122,012 (as of 23 June). Our investments add to our scholarship funds.

The breakdown of our bank accounts is:

Checking	\$5,509
Savings	\$10,075
SEF*	\$41,400
Investments	\$65,028

* SEF = Scholarship Endowment Fund

One purpose of our investments is to raise funds for scholarships. The SEF is limited by Washington State such that only the earnings can be used for scholarships.

My replacement: Allen Storaasli has agreed to take over the position of Treasurer. Allen is a member of the Board.

John Barton '54
CHSAA Treasurer

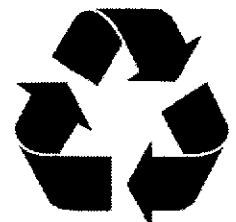
Every Penny Saved is !!!

Every Penny Saved . . . is another penny available for scholarships. We have nearly 8000 names in the CHS Alumni Association mailing list. The Alumni Newsletter publication costs about \$1500 for postage plus another \$1100 for printing. Please help us maximize our scholarship dollars by viewing the newsletter on line. Please send us an email if you wish to participate. We need your name and address to cancel your snail-mail delivery, and your email address to alert you when another newsletter is available on line.

We do not allow your personal information to be used for anything other than CHS alumni activities.

Our email address is:

chsaaboard@gmail.com



ONE OF OUR HONORED DEAD

Cleveland High School Memorial Forest, May 28th 2010, Wendy Noritake talks about her uncle, Yoshito Noritake, class of 1940.

Hi, I'm Wendy Noritake, and I'm honored to be here today.

I didn't know my Uncle Yoshito Noritake. He died about 10 years before I was born, but I know something about him from my dad, who was Yoshito's youngest brother.

During World War II, the Noritake family was one of 120,000 Japanese-Americans living on the West Coast who were forced from their homes and evacuated to internment camps. The family lost everything.

For the students who are listening, you might ask yourself how you would feel if the FBI or military burst into your home and ransacked through your things and told you that you had three days to move and you could only take one suitcase with you. You knew you were innocent, you didn't do anything wrong, but it was the color of your skin or the accent in your voice that made you different, hated, discriminated against.

Our family didn't know where they were being sent, how long they were staying or if they were ever coming back.

In the camp my grandfather, Yosh, his two brothers and three sisters lived together in the barracks with other families, surrounded by barbed wire fences and armed guards. Even though they were U.S. citizens, they were treated like criminals.

My grandfather was furious when Yosh enlisted in the army. Yosh felt that he was American first, Japanese second, and he wanted to prove he was a loyal American citizen.

My uncle landed in Italy in May of 1944 and fought nonstop into France. He was part of the Japanese-American 442nd Regimental Combat Team, the most decorated unit in US Military history.

He died on October 16, 1944 in Bruyere, France, at the age of 23, while the 442nd was attempting to rescue the Texas Lost Battalion. In the days leading up to the rescue, the 442nd lost 800 Japanese-American men to save 211 men in the Texas battalion.

My uncle's body was eventually returned to Seattle, and my grandfather and the family were devastated by the loss. No amount of medals or citations could replace him.

What has given me hope and optimism was finding this memorial site. In 2007 while I was researching my uncle's death, I met Pat Rosenkranz who told

me about the Forest and about her book Honored Dead. Until that day, no one in my family knew that this memorial site existed, nor the story of how the students and faculty raised money to buy this property in 1945.

Pat invited me, three years ago today, to attend your Memorial Service and I was able to bring my Aunt, Patricia Noritake Uno, Yosh's youngest sister. I know she was pleased to take part in the ceremony and walk to the big rock. This is all more meaningful to me because she died at the end of that year. Her daughter and grandson, Kathy Uno and Johnny Vadez are here with me today.

My wish is that this ceremony will continue for the future generations to come, so that we can all remember and honor the students of Cleveland High School who made the greatest sacrifice, and to pray for the end of racism, discrimination, and especially, the end of all wars.



Wendy Noritake Honoring her Uncle

SCHOLARSHIPS AWARDED TO FOUR CHS STUDENTS

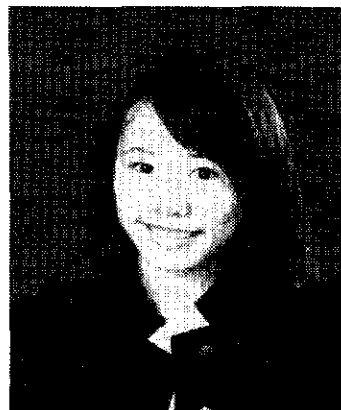
The quality of the four candidates was close. The Scholarship review committee had \$5,000 allocated by the CHS Alumni Association Board of Directors. These funds are made possible by contributions from members and fund raising activities. One committee members, Irene (Kubota) Plosky '60, decided to donate \$1,000 in honor of her brother Tom Kubota '57. Her generosity allowed the members to award \$1,500 to each student.

The Committee consisted of Bernie Moskowitz, Sharon Victor, Louise (Araki) Gales, Irene Plosky and JoAnn (Victor) Smith.

Katie Bennett Katie plans to attend Washington State University in the fall majoring in Communications. She hopes to become a broadcast journalist. Katie was active in student government, the achievers program and the homework club among other activities. She was also involved in community service projects while maintaining a 3.3 GPA. She is focused on furthering her education in pursuit of her dreams in spite of challenges and obstacles in her personal life.



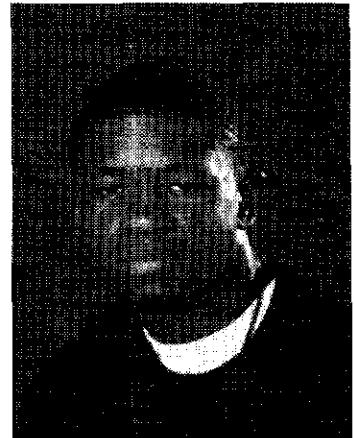
Mei Chang Huang Mei participated in the Running Start program to earn college credits while in high school. She has maintained a 3.8 GPA and plans on studying Chemistry at the U of W. She hopes to go to medical school after attaining her BS. Mei has taken an active role as a volunteer at the Youth Tutoring Program assisting at-risk students with homework and inspiring them to stay in school. Mei overcame a devastating period in her freshman year. With the guidance of her sister she became active in high school activities, worked part time and donated funds to charity after selling clothes she designed and made.



Rania Mussa After the brutal death of her father, Rania began her high school years in Uganda where her family were refugees. After coming to the US she has made the most of opportunities available to her. She has maintained a 4.0 GPA, participated in Washington State Achievers, has been active in school extracurricular activities and helped others by tutoring younger students. She plans to attend Whitman College majoring in pre-med (Biology).



Ivery Rhodes Ivery is looking toward a career using his math skills and leadership qualities. He plans on attending Eastern Washington University seeking a degree in Business Management with the hope of helping low-income families own their own homes. He succeeded in bringing his GPA up almost a full point in the last year of high school and has been active in school government, sports and Achievers. He has also been active in community activities assisting the homeless and food banks.



**YOUR CHSAA
DONATIONS
PAID FOR
THESE
SCHOLARSHIPS
!!!**

GEORGE V. JANECKE '44 RECEIVES PRESIDENT'S VOLUNTEER SERVICE AWARD

By Alison W. Sing '64

A presidential honor was recently bestowed to George V. Janecke, 84 of Lynnwood, WA. George, who graduated from Cleveland High School in 1944 and retired as a Boeing executive after 31 years of service, has worked tirelessly as an active community volunteer with the Veterans of Foreign Wars, Evergreen Hospice, the Lynnwood Food Bank, Stevens Hospital Social services and many other community organizations.

A quiet and humble individual, George is a bit embarrassed by all the attention. He would prefer shunning the limelight and yet, he has earned every bit of this recognition. His civic service includes a stint as a Lynnwood City Council member in the mid-90s.

Lured to the Lynnwood Library recently under the pretense of celebrating a library employee's 20 years of service, the local chapter of the National Society Daughters of the American Revolution honored George for his dedication and service to his community.

From his extensive list of activities and commitments, it was his Hospice work with the terminally ill over the past 25 years that earned him the Presidential Volunteer Service Award from President Barack Obama with a letter expressing the nation's deep appreciation for his service to his community, his work in health care, historic preservation and youth-focused activities.

George is married to Becky (Sharpe) and between them they have nine grown children and 14 grandchildren.

This writer has had the privilege and honor knowing and working with George during the past twenty years. I first met George as a planning commissioner for the City of Lynnwood and was immediately struck by George's sincerity and commitment to his community. It was not until George and I crossed paths at one of the annual treks to the Memorial Forest that I realized we both graduated from Cleveland High School. Twenty years separated our graduations, George in 1944 and 1964 for me.

Just like the dramatic play, "Six Degrees of Separation" we shared a unique connection that I have only found with graduates from Cleveland High School. George epitomizes the true "spirit" of Cleveland High School. Our alma mater produced many fine graduates and George Janecke is a product of our former teachers and school administrators.

(Alison W. Sing '64, former president and treasurer of the Cleveland High School Alumni Association (1997-2009))



Photography by Susie Fitzhugh

Cleveland High students celebrate their graduation on June 17 at Memorial Stadium

DID YOU KNOW ??? By John Barton '54

Those ancient Egyptians were so smart. They built the pyramids that lasted over 4000 years. . . a lot longer than our King Dome, which lasted a mere 23 years. Actually, the Great Pyramid of Giza, the Khufu Pyramid, was completed around 2560 BC and remained the tallest structure at 481 feet until it was surpassed by the 555-foot Washington Monument, completed in 1884. So the Great Pyramid reigned as the tallest man-made structure for 4444 years. But what does this have to do with the CHS Alumni Association? [Note: The height of the Great Pyramid can only be calculated because a stone blocks are missing at the top.]

The Washington Monument reigned supreme for just five years until it was surpassed by the 1063-foot Eiffel Tower. Being almost twice as high as the Washington Monument, the Eiffel Tower dominated the height chart for 42 years when it was dwarfed by the 1453-foot Empire State building in 1931.

There have been a series of tall buildings constructed in recent years, each leap-frogging over the previous record holder. Completed just this year, the Burj building in Dubai now towers over all others at 2717 feet. How long will it hold the record as the tallest building? Certainly not for 4444 years.

With its long record as the tallest man-made structure, the Great Pyramid of Giza was really a significant accomplishment in human history. There are all sorts of superstitions and myths about how this pyramid was built, who really built it (aliens ???), and magical things about its shape. Do you remember those stories a few years ago when it was claimed that a pyramid-shaped container could greatly extend the storage life of food? There were also stories about the healing effects of pyramid-shaped devices. Who knows, maybe some of them are still around.

I am not going to try to dissuade anyone of any beliefs that they may have about the Great Pyramid or its shape, but I do want to tell you a fact about this pyramid that most people don't know. There is a significant mathematical relationship in the dimensions of the Great Pyramid. The "great" question is whether this relationship was designed into the structure, or did it occur as a matter of happenstance. I will present the facts and you can form your own opinion.

Mathematicians discovered a long time ago that there is a fixed relationship between the radius of a circle and the distance around the outside edge — the circumference. This fixed relationship is called Pi and it has a value of 3.14159265358979323846264338327950288419716939937... The number goes on and on — there is no known end to it. To calculate the circumference of a circle one merely multiplies the radius by 2 and by Pi. Hence, recalling simple grade school math, the equation is: $C = 2 \times R \times \text{Pi}$ where R is the radius and C is the distance around the circle. So what does this have to do with the Great Pyramid ??? Read on.

Most researchers believe that the Great Pyramid was designed to have a height of 280 cubits. This being the case then the height may be related to the distance around the base of the pyramid (the perimeter) by the value of Pi. This relationship can be expressed as: $P = 2 \times H \times \text{Pi}$ where H is the height of the pyramid and P is the perimeter — the distance around the base.

We can evaluate the validity of the Pi relationship to the dimensions of the Great Pyramid by doing some simple calculations. We calculate a theoretical height based on the perimeter having a well established value of 36,277.7953 feet and the accurate value of Pi from above:

$$H = P / (2 \times \text{Pi}) = 481 \text{ ft } 1.79044 \text{ inches} \quad \text{Theoretical Height}$$

We can calculate the as-built height by converting the 280 cubits height to feet and inches. BUT . . . how long is a cubit? It turns out that there are all sorts of lengths for cubits, which is thought by some to be the distance from the elbow to the tip of the middle finger — about 20 inches, but this varied from country to country. Egyptologist theorize that the pyramid designs were based on the royal cubit, which is about 20.629921 inches. Using this value, the as-built height of the Great Pyramid is calculated as:

$$H = 20.629921 \times 280 = 481 \text{ ft } 4.37795 \text{ inches} \quad \text{As-Built Height}$$

In comparing the two heights we see that the as-built height is 2.587513 inches too tall — about two and a half inches. That is a very small difference for a structure that is over 481 feet tall. The difference is equivalent to an error of one out of 2231.

I ask you, the reader, could it just be a happenstance that the relationship of the height to the perimeter is that close to Pi, or . . . did the Egyptians design the Great Pyramid to have the Pi relationship between the perimeter and the height.

Now what does all this have to do with the CHS Alumni Association? I had a 13-page newsletter that can only be printed in 8 or 16 pages. Yes, I needed filler material.

CHS ALUMNI ASSOCIATION FINANCES

By John Barton '54

When I became the Treasurer in September of 2009 I was of the opinion that the CHSAA investments should be in extremely safe securities such as Certificates of Deposits (CDs) because they have a fixed rate of return and they are protected by FDIC insurance. I wanted 100-percent safe investments so we could continue to give scholarships to CHS students each year.

As part of our investments we have our Scholarship Endowment Fund (SEF) from which we can only spend the earned income on scholarships. The principal is not to be touched according to Washington State regulation. And how does the State get involved? Every year we apply to the Higher Education Coordinating Board (HECB) for a grant. The State has responded by giving us \$2000 grants each year under the condition that we provide matching funds — another \$2000 — and they impose the restriction that we never spend the principal. We can only spend the earned income.

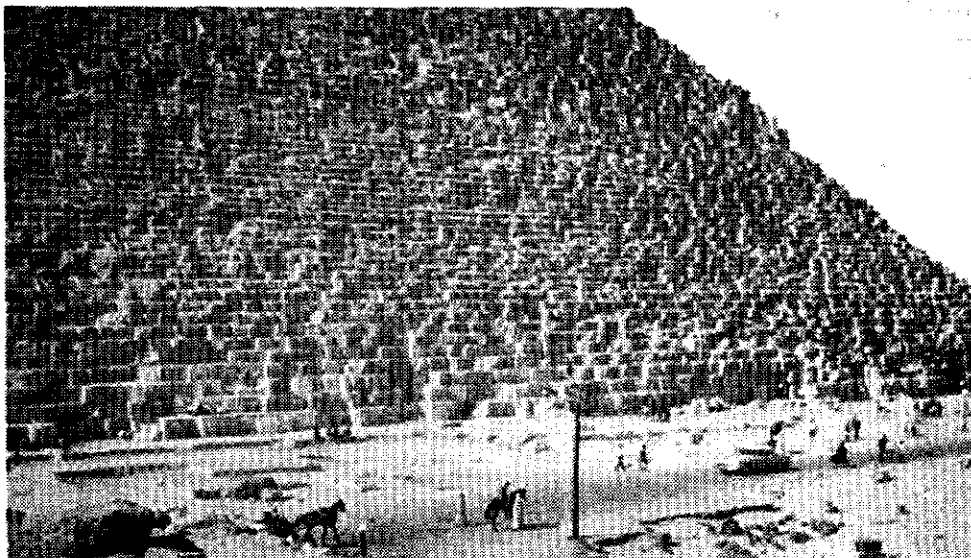
In the last few months I noticed that our CDs were not earning enough income to fund a single scholarship let alone multiple scholarships. It became obvious that we needed some other form of investment if our resources were going to earn money for scholarships. Ah, but what about State regulations and restrictions. I called the HECB and discussed the problem with them. I couldn't have received a better response. They did not require us to invest in 100-percent safe CDs. In fact, they expected us to make investments that would, with prudence, maximize our annual scholarships.

I sought out an investment advisor that had experience in dealing with non-profit organizations. For propriety reasons, I did not want someone that I had a personal business relationship. I started working with a person from Edward Jones and asked him to develop a plan for investing CHSAA funds. The Edward Jones representative developed an investment strategy and it was presented at our last CHSAA Board meeting. The Board approved of this strategy and we are now in the process of converting from CDs to investment accounts at Edward Jones.

Our financial resources will be invested in two major accounts — a scholarship Endowment Fund account, and a General Investment account. Our checking and savings accounts will be maintained separately to cover day-to-day expenditures.

I am stepping down from the Treasurer position of CHSAA because it is not my cup of tea. I am currently in the process of turning treasury responsibilities over to Allen Storaasli '62, who joined the Board in 2009. During the last year I have found Allen to have the skills and the integrity to perform the treasury position. I have made four major accomplishments in the last nine months. First, I established and documented how much money was available in each spending fund such as the CHS Memorial Forest, the General Fund, the Athletic Fund, Scholarships, and the Mailing and Publication Fund. Second, I worked to simplify some of the processes associated with treasury position. Third, I developed a strategy for supporting CHS sports teams from the Athletic Fund. And lastly I have started the process of investing our CHSAA resources, as discussed above, so we can get the maximum return on the contributions from CHSAA members.

My intention is to stay on the Board and help out in other areas . . . such as this blankety blank blank news-letter.



The Great Pyramid is composed of over 2½ million blocks of limestone which weigh from 2 to 70 tons each. Its base covers over 13 acres and its volume is around 90,000,000 cubic feet. Its height is just over 481 feet.



2010 EAGLE 100s

Platinum Eagles (\$1000-\$4999)

'60 Irene Kubota Plosky

Golden Eagles (\$500-\$999)

'48 Suzanne Desimone Hittman

Silver Eagles (\$200-\$499)

'43 Alex J. Carmichael

'43 George W. Miller

'44 Stanley G. Ridings

'45 Lois Allan Olson

'48 Leo Utter

'49 Dale & Jeanette George Erickson

'49 Debra Lenci Peitromonaco

'49 Patricia L. Rosenkranz

'51 William C. & Mary Lantz

'52 Barbara (Bianchi) Bull

'52 James & Margie (Primoli '53) Lambo

'54 John R. & Mary Lou (Zarkades) Barton

'56 Edwin P. McArthur

'58 Victor A. Munsen

'58 Clarence F. Seeliger

'62 John K. Keppler

'63 Thomas J. Hansen

'64 Gerald R. Robinson

Bronze Eagles (\$100-\$199)

'34 Frances Cozy John

'40 Emil M. Martin

'41 Robert S. Rafanelli

'42 Olive (Clark) Brown

'42 Gordon J. Glockner

'43 William A. Schmalz

'44 Phillis Donald Vallade

'45 Meralyn H. Baughman

'46 Shirley (Madsen) Yellam

'48 JoRene (Schmalz) Abel

'49 Donald E. Armeni

'49 Louise Bianchi Bullington

'49 Eileen Christensen Funge

'49 Veronica Mennie Tutino

'51 Robert W. Tessandore

'52 Forrest L. Bullington

'52 Lola Ross Simmons

'54 Margaret J. Brown

'54 Dwight H. & Teresa C. Moberg

'55 Merlin Bosch & Della McCleary (56)

'55 Evelyn Fish Griffin

'55 Dick & Bev Minice

'56 Brad Hill

'57 Judy M. Keithley

'57 Merlina Carmignani Tate

'58 Alice (Thompson) Stanley

'58 Susan Araki Yamamura

'59 Franzell Pankey

'59 Kathleen Gemmill Stremick

'59 Rima Shaffer

'61 Ira Wes Reynolds

'61 James & Jolene (Manincor '60) Landry

'62 Beverly J. Del Valle James

'62 Ben W. Wakefield, Jr.

'63 Randolph T. Hikida

'63 K.A. Knowles

'64 Toni Horton Lamberton

'66 Linda L. Grant

'68 Charles C. Lindberg

'70 Allan J. Ohlsen

'73 Ronald T. Roletto

'74 Jennifer Ferry Woods

WE APPRECIATE ALL CONTRIBUTORS
REGARDLESS OF THE AMOUNT GIVEN

FALLEN EAGLES

1935 Arthur Haigh
1935 Esther (Pricco) Schaute
1937 Elwin E. (Joe) Empens
1937 Mabel (Hosko) Lee *
1939 Belva (Eckstrand) Bonilla
1940 Gustav Plank *
1942 Nao (Okuda) Belser
1942 Joann Ranney
1944 Ken Bullock
1946 Walt Pennington
1948 Donald Snyder
1948 Leo Utter
1950 Joyce (Litch) Sluka
1951 Derald Baskin
1951 Richard M, Tutino *
1952 Dick Bronson
1954 Richard M. Beers
1961 Dale Horton *
1965 Jerry L. Grant "
1969 Katherine K. Izumi
1974 Leonard Lombardi



Note: Asterisk denotes classmates who passed prior to 2010

IN MEMORIAM

An Eagle 100 donation was made in honor of Jerry L Grant, class of 1965, by Linda (Mayer) Grant, class of 1966. They had been married 39 years when Jerry passed away in June of 2009.

An Eagle 100 donation to the scholarship fund was made in memory of Richard Beers, class of 1954, by classmate Margie (Wailrof) Brown. Dick passed away in April 2010.

An Eagle 100 donation was made in honor of Richard Tutino, class of 1951, by Veronica (Mennie) Tutino, class of 1949. They had been married 60 years when Dick passed away on December 21st of 2009.

ALUMNI EVENTS

Class of 1955 is having its 55th Reunion Picnic on August 29, 2010. The picnic will be at Landmark Event Center in Des Moines (Masonic Home grounds) between the hours of 1-6 PM. Single Pre-registration is \$15; Couple \$25 and will be a catered/potluck event. Classmates from '54 or '56 would be welcomed. Information: Betty (Morse) Stewart at: 360-402-5056
Email: bstew4art@msn.com

Class of 1970 Reunion July 24, 2010
McCormick & Schmick's On Lake Union
1200 Westlake Ave N. - Seattle
No-Host Bar
Time: 6:00 to 11:00 pm
\$ 65.00 per person if paid by-July 1, 2010
Information: Helen Sing: hcs555@comcast.net

Classes 1973 - 1975

Classes of '73 through '75 (or about)
When: Saturday, Sept. 18, 2010
Time: 6 PM through 1:30 AM
Location: The Four Seas,
714 S. King St, Seattle
Cost: \$20 pre pay or \$30 at the door.
No host bar.
For information contact Richard Tada ('75)
425.392.4560 or richtada@comcast.net

Class of 1980 Reunion

Friday, August 13 @ 4:00 PM - til ???
Karma Restaurant in Belltown - No host bar
2318 2nd Ave., Seattle, WA 98121
Sunday, August 15 @ 12 Noon - til ???
Mercer Island Lid Park
Potluck Cookout (Bring a "BIG" dish to share)
\$25.00 each for the "Reunion Weekend Events"
Information: E-Mail: chs80seattle@gmail.com
Phone 253-653-1767

Class of 1985 25th Reunion

When: Saturday, July 24th 2010
Time: 7:00PM
Where: Pac Island Grill (David Landon's place)
2012 South 320th Street
Federal Way WA 98003
Web: www.hawaiianstylebbq.net
Phone: (253) 529-8667
Cost: \$10.95 per person
Information call:
Valaine 253.859.0581

July 29 Pre Golf Dinner - See page 10

Aug 7 Golf Tournament - See page 10

9th Annual CHSAA GOLF TOURNAMENT & DINNER

CHSAA IS SPONSORING TWO FUND RAISING
EVENTS TO BENEFIT OUR SCHOLARSHIP FUND

**EVENT 1: DINNER AT THE SOUTH CHINA RESTAURANT in BELLEVUE
THURSDAY, JULY 29TH, HOSTED BY SID KO**

Enjoy a 5-course dinner for only \$25 per person with the satisfaction of knowing that a generous portion will benefit the CHSAA scholarship fund. A silent auction will also be a part of this memorable evening.

*(NOTE: we really need donations of quality auction items
..... contact Barb Mar <Van Eynde> see info below)*

EVENT 2: 9TH ANNUAL CHSAA GOLF TOURNAMENT

LOCATION: DRUID'S GLEN GOLF COMPLEX in COVINGTON

WHEN: SATURDAY, AUGUST 7TH

TIME: REVERSE SHOTGUN START AT 8:00 AM

COST: \$90 IF REGISTERED BY JULY 22ND (\$100 THEREAFTER)

(NOTE: Space limited to 64 players . . . first come, first served)

HOLE SPONSORS:

Get your business, civic group, or Class to sponsor a golf hole for only \$200. Support the CHSAA scholarship fund while gaining name recognition.

LICORICE ROPES:

Buy licorice ropes and reduce your score. Teams are limited to 5 ropes. This may be increased to 10 ropes per team if an ample supply is available.

REGISTRATION FORMS ENCLOSED (see pages 11 & 12)

WE'LL SEE YOU AT THE DINNER & ON THE COURSE !!!

Barb Mar Van Eynde '71
Email: vaneynde_family@yahoo.com
Phone: 425-861-7442

CLEVELAND HIGH SCHOOL
ALUMNI ASSOCIATION
501 © (3) tax-exempt organization
PO BOX 94004
SEATTLE, WA. 98124-9404
Web site: www.clevelandalumsea.org

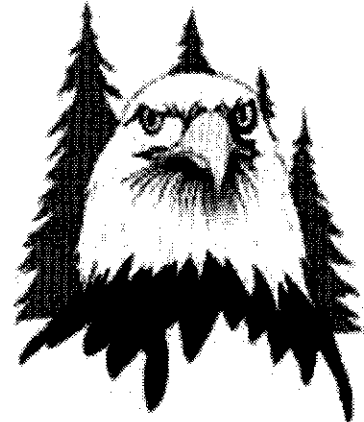
Kind regards,
Your CHSAA Team

REGISTRATION FORM

2010 CHSAA GOLF TOURNAMENT

Date: Saturday, August 7, 2010
Time: 8:00 AM , Reverse Shotgun
Format: 4 Person Team

Where: Druids Glen Golf Club
 29925 207th Ave SE
 Covington, WA 98042
 Tel: 253 638-1200



Entry Fee: \$90 per player by July 15th
After July 15th: \$100.00

Essential Information:

- Golfers receive: green fee, golf cart, morning coffee, and boxed lunch at end of tournament
- Prizes will be awarded for both individual and team achievements
- All profits go to our tax-exempt 501(c)(3) CHSAA Scholarship Endowment Fund
- Sponsor a hole for \$200 and receive a sponsorship sign on a hole and program acknowledgement too!

Annual CHSAA Golf Tournament Entry Form

Team Captain _____ Year Graduated _____
 Address _____ City _____ State _____ Zip _____
 Phone _____ E-mail _____

	My Team	Year Graduated
1.	_____ (Team Captain)	_____
2.	_____	_____
3.	_____	_____
4.	_____	_____

Important: Each team must have an entry form. Be sure to enclose your entry fee of \$90 per player or \$360 per team. If you do not have a full team we will pair you with another partial team. Make checks payable to CHSAA and note 2010 Golf on the memo line. Mulligans and licorice ropes (in place of string) can be purchased on-site during registration. Mulligans: 3 for \$10. Licorice ropes: \$5 each.

Pre-orders for licorice ropes at \$5 each can be added onto your registration fee.

How many?? _____ 10 max.per team

To join the putting contest a \$5 donation will be taken prior to your start time.

Mail your entry form to CHSAA, PO Box 94004, Seattle WA 98124-9404 by Thursday, July 15th, 2010. Late entries will be charged an additional \$10 per player.

Yes _____, my company (Class) would like to sponsor a hole at this year's Annual CHSAA Golf Tournament. [Enclose a check for \$200. Please include company logo or information for tee sign/banner.]

For more information contact Barb Mar Van Eynde '71:

Phone 425-861-7442 or email = vaneynde_family@yahoo.com

REGISTRATION FORM

2010 CHSAA PRE-GOLF DINNER

Date: Thursday, July 29th, 2010
Time: 6:00 PM no host bar and Silent Auction
Format: 7:00 PM Buffet Dinner

Where: South China Restaurant
5606 119th Ave SE #A
Bellevue, WA 98006
Tel: 425-643-5085

Price \$25.00 per person
No Host Bar



Essential Information:

- 5-course dinner
- Silent Auction
- Door Prizes
- All profits go to our tax-exempt 501(c)(3) CHSAA Scholarship Endowment Fund

2nd Annual CHSAA Pre-Golf Dinner

Name _____ Year Graduated _____
Address _____ City _____ State _____ Zip _____
Phone _____ E-mail _____

Number of people _____ X \$25 each = Enclosed Total \$ _____

Mail your form to:
CHSAA
PO Box 94004
Seattle, WA 98124-9404

Postmark No Later Than:
Thursday, July 15, 2010

For more information contact Barb Mar Van Eynde '71
at 425-861-7442 or email at vaneynde_family@yahoo.com

CHSAA CONTRIBUTES TO CHAMPIONSHIP RINGS

It was a surprise to just about everyone when the Cleveland High School girls basketball team won the state championship game against cross-town rival Holy Names. After all, Cleveland had suffered two earlier losses against this Metro League power



house. But at the end of the Class 3A State Girls Basketball Tournament there stood the Cleveland girls holding the trophy high over their heads. A memory that will likely live with them forever.

The Cleveland High School staff wanted to do something special for the girls basketball team but the school budget lacked the financial resources to do anything significant. Someone suggested a championship ring for each team member but how to pay for it? The parents, the principal and vice principal all agreed to chip in but they were way short of the money needed.

Along came Jim Southcott, CHSAA's liaison with the high school staff. Vice principal Margie Milligan asked if the Alumni Association would be interested in contributing to the purchase of rings. Southcott was all in favor and took it to the Board of Directors for a vote.

The rest is history. The Board approved the purchase and Pat Coluccio and Bernie Moskowitz, acting for the Board, delivered a check to cover the shortage.

Some say that this State championship put the little red and white school house on the side of the hill back on the map. A State championship is quite an accomplishment.

CHSAA SUPPORT TO CHS SPORTS TEAMS

Members of the CHS Alumni Association (that's you) have contributed to the Athletic Fund for a number of years. This Athletic Fund has built up to the point that we will attempt to provide financial support to CHS teams on a yearly basis.

Team sports in the Seattle Metro league are not like it used to be where the players simply turned up for practice every day, and once a week there was a game. At least it is not that way if you want to develop your players to their fullest potential so that they can compete on an even basis with the other teams in the league. Examples of some needs include team camps for football players, registration fees for invitational track meets, a pressure washer for the tennis courts, plyometric training equipment, a portable shelter (a tent) for cross-country runners, etc.

The Seattle School District provides only a small portion of the funds that a team needs to compete. The rest of the needed funds is collected through fund raisers by the coaches and team members, and through support groups such as . . . the CHSAA.

The CHS Athletic Director, Rebbecah Emanuel, has provided a list of unfunded items needed for CHS sports teams. The list provides detail for each team's needs and is categorized into High Priority items and Desired items.

The price tag just for the high priority items far exceeds our ability to cover the costs from the Athletic Fund. Even if we had sufficient funds to cover everything, it is best to have the CHS players and coaches do some of their own fund raising to demonstrate the sincerity of their request. Therefore, our strategy will be to provide a fraction of the money for specific items that we approve if the respective team comes up with the remainder. Our support will be open to consideration for all CHS sports programs.

We will evaluate our own efforts in the coming school year to determine the level of financial support that we can sustain on a yearly basis.

Your financial support to the Athletic Fund will be greatly appreciated. We will do our best to spend this money wisely.

John Barton '54
Board Member

CHAMPS

FUTURE CHAMPS



HELP !!!

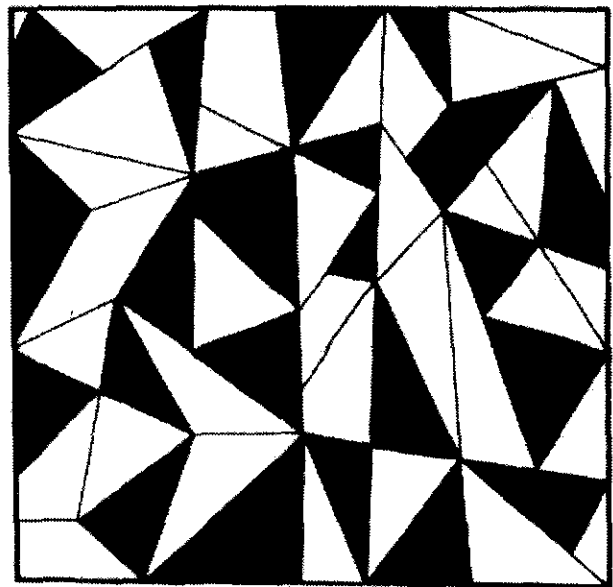
Are you retired ?? Sitting around without much to do. Looking for purpose and satisfaction in your life ?? We have the solution. Move to Spain and take us with you.

What ?? You can't afford that ??

Okay, secondary solutions. How about helping publish the Alumni Newsletter !!!

You don't have to be located in Seattle. Anywhere you can get an internet connection would do, including the South Pole. We need your writing skills.

We want YOU !!!



There is a perfect 5-point star in the above maze.

Can you find it ???

CHS Alumni Association Donation Form

We suggest that your donation include \$15 to help defray our mailing expenses and publication costs.

Please make your check payable to: **CHSAA or Cleveland High School Alumni Association.**
Donations should be mailed to: **PO Box 94004, Seattle, WA 98124-9404.**

I would like to support the work of the Alumni Association with a donation as indicated below:

Mailing expenses - (\$15 suggested) \$ _____
Alumni Association General Fund (unrestricted) \$ _____
CHS Athletic Fund \$ _____
Memorial Forest Fund \$ _____
Annual Scholarship Fund \$ _____
Scholarship Endowment Fund* (Restricted) \$ _____

My Total Donation is \$ _____

Alumni Donations totaling:

\$100 - \$199
\$200 - \$499
\$500 - \$999
\$1,000 - \$4,999
\$5,000 - \$9,999
\$10,000 plus

Eagle 100 Club Designation:

Bronze Eagle
Silver Eagle
Golden Eagle
Platinum Eagle
Diamond Eagle
Special Honors

Note: You may choose to make multiple donations over the course of a calendar year. Your name will be added to the Eagle 100 Club list if your cumulative total equals or exceeds \$100.

Contributor Information:

Member #1 _____ Class _____
Enter First (Maiden) and Last Name

Member #2 _____ Class _____
Enter First (Maiden) and Last Name

Address: _____

City _____ State _____ Zip Code _____

Telephone Number _____

_____ **Check here if you made a change in contact information.**

My E-mail address is: _____

Contact Information:

Alumni Website: Check out the latest activities: <http://www.clevelandalumsea.org>

Alumni Passages: Please send death notices and/or obituaries to our Post Office Box:

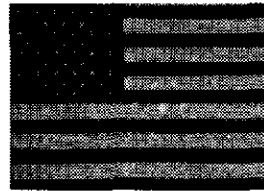
Attention - Membership Coordinator [or phone 425-487-3952 or email: chsaajo56@comcast.net]

Reunion Planning: Email chsaajo56@comcast.net or phone: 425-487-3952

Board Members: Call them directly by phone or email -- See page 2 information

Cleveland High School Alumni Association, PO Box 94004, Seattle, WA 98124-9404

**Cleveland High School
Alumni Association
P.O. Box 94004
Seattle, WA 98124-9404
Email: chsaaboard@gmail.com**



NONPROFIT ORG.
U.S. POSTAGE
PAID
Seattle, WA
Permit No. 2571

Return Service Requested

Alison W Sing
17015 38th Ave W
Lynnwood, WA 98037-7010

CLEVELAND HIGH SCHOOL ALUMNI ASSOCIATION

Mission Statement: A nonprofit organization of Washington State and the United States 501(c)(3), this Association was founded for the exclusive purposes of: (1) preserving the Cleveland High School Memorial Forest in perpetuity to honor former Cleveland students who gave their lives in service to the United States of America, (2) supporting educational studies in forestry, ecology, botany and environmental studies of the forest, and (3) supporting and assisting the students and staff of Seattle's Cleveland High School in their educational activities. Any individual who attended Grover Cleveland Junior or Senior High School is a member of the Cleveland High School Alumni Association.

Please help us keep the database current by sending a post office change of address form or by contacting the membership secretary when you move. To protect your privacy membership list is not distributed to anyone except for activities associated with the Alumni Association.

Volunteer Opportunities:

I would like to help build a strong alumni association. I am interested in the following:

- I can serve on the Board.
- I can serve on a committee: Alumni Relations, Scholarships, Golf Scramble, Finance & Budget, Memorial Forest, Audit, Bylaws Review, and/or Nominations/Election.
- I would like to help out with an event, activity, or a specific project.
- I would like to help in some other way.

Check out our Alumni website for the latest information on what is happening with the Alumni Association or our alma mater. <http://www.clevelandalumsea.org>

Alumni Passages: Send death notices and/or obituaries of former classmates to our Post Office Box, Attention - Secretary. This email address can be used as an alternative: chsaajo56@comcast.net